



PC Settings

Cube-3d

Tutorial



System requirements

Minimum	Medium	High
Windows 7, 8, 10; 64 bit	Windows 10; 64 bit	Windows 10; 64 bit
Intel i5 or Ryzen 5	Intel i7 or Ryzen 7	Intel i9 or Ryzen 9
16 GB RAM	16 - 64 GB RAM	64 - 128 GB RAM
nVidia GTX 1050 or better	nVidia RTX 3060 or better	2x nVidia RTX 3060
SSD 128 GB + HDD 500 GB	SSD 256 GB + HDD 1 TB	SSD 512 GB (M.2) + HDD 1 TB

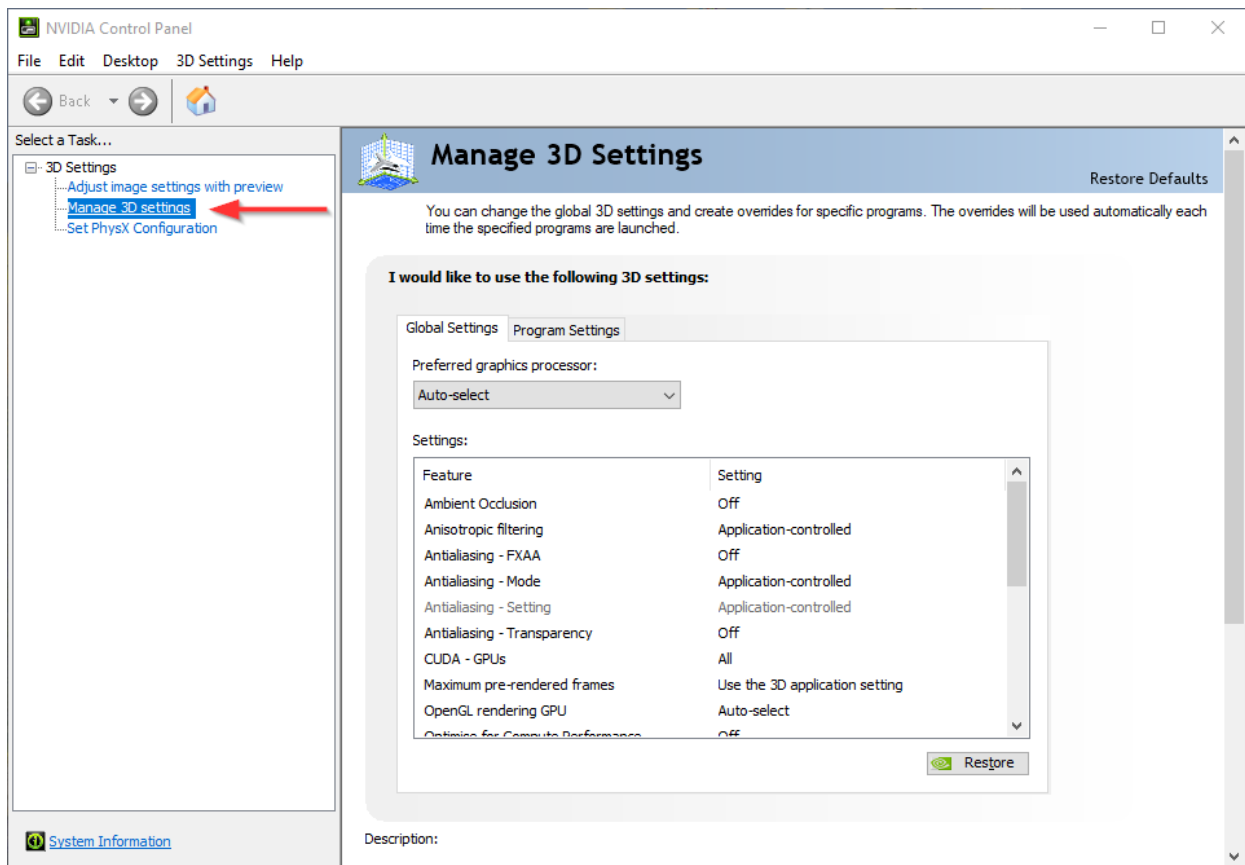
Graphic card settings

To optimize your PC with the best performance for cube-3d, follow the steps below

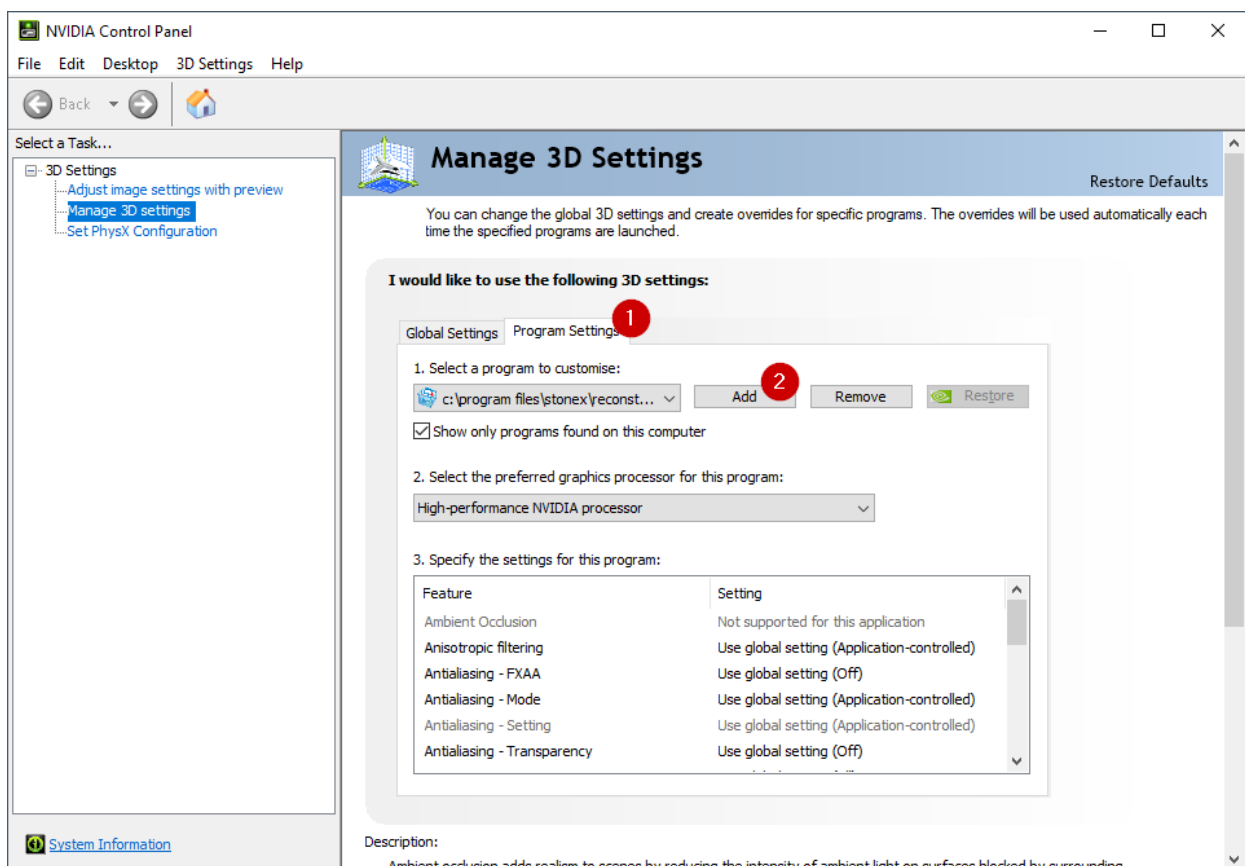
- Double-click on the graphic card icon.



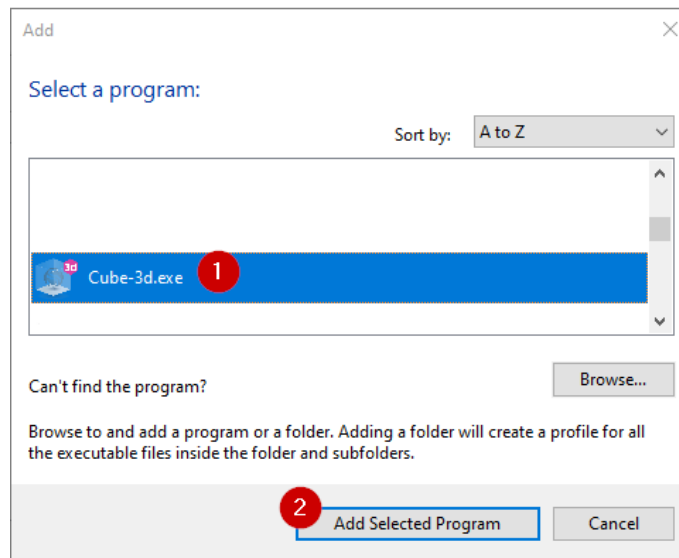
- Select "Manage 3D settings"



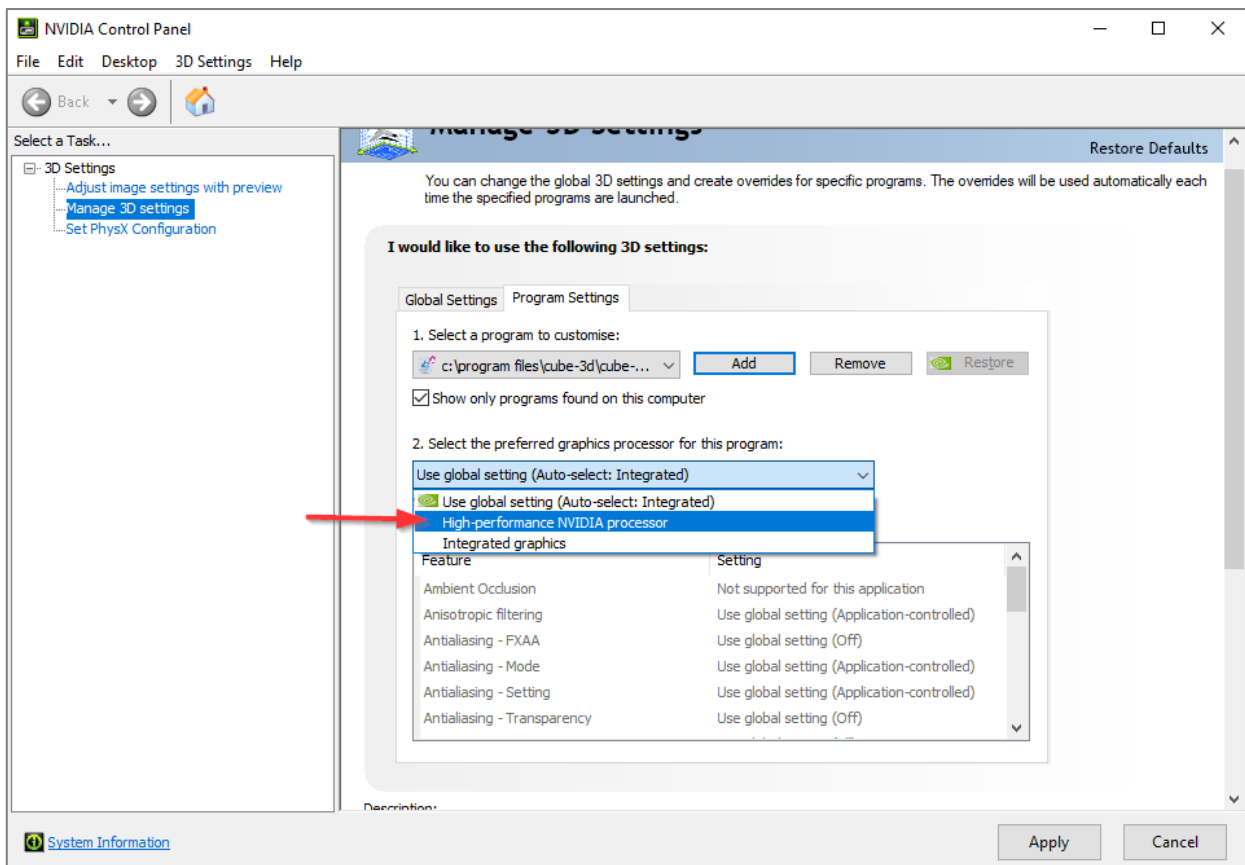
- Select "Program Settings" tab (1) and click on Add (2).



- Select cube-3d (1) and click on "Add selected program" (2)



- Select "High-performande NVIDIA processor"



- Click on "Apply"

Stand-by settings

It is also suggested to disable the stand-by/shutdown of the PC. You can quickly access these settings from here:





STONEX® SRL

Viale dell'Industria, 53 - 20037 Paderno Dugnano (MI)

Tel: +39 02 78619201

www.stonex.it | info@stonex.it